



44TH ANNUAL | 1PM | RUSO, ND

02.07.26

KSR PRODUCTION SALE

WELCOME!

It is with great excitement and pride that we welcome you to the **44th Annual Klain Simmental Ranch Production Sale**. Whether you are a long-time customer or joining us for the first time, we sincerely appreciate your interest and support in the KSR program.

As we move forward through a period of transition within our operation, we are grateful for the patience, encouragement, and loyalty our customers have shown. The transition to the next generation has been going very well, and your trust throughout this process has meant more to us than we can express. While there may be new faces taking on larger roles, the core values and commitment to quality cattle that Klain Simmental Ranch was built on remain firmly in place.

We are **extremely eager about this year's offering** and the progress our cattle have made. The sire groups represented in this sale are outstanding, including progeny from LCDR Diligence, JC MR Pontiac, Clemson Elite, and many more. These cattle have performed exceptionally well this year, and we are proud of the consistency and quality they represent. We believe this set offers genetics that can add real value and longevity to your operation.

We invite you to stop by the ranch at any time prior to the sale to view the offering in person—we always enjoy visiting with fellow cattlemen and women. A supplement sheet will be provided on sale day containing up-to-date weights, scrotal measurements, and frame scores to assist you. For those unable to attend in person, online bidding will once again be available through DVAuction, where you can also view sale videos prior to sale day.

As always, please do not hesitate to reach out if you have questions or would like more information on any lot. We truly appreciate your business, your confidence in our program, and the relationships we continue to build. We look forward to visiting with you and hope to see you on sale day.

Thank you for your continued support.

THE KLAIN FAMILY

TREY - 701.531.2008

DURNELL - 701.720.1316

SALE DAY PHONES:

701.448.2408

701.448.2409

THANK YOU FOR YOUR INTEREST

I N T H E K S R P R O G R A M



SCHEDULE OF EVENTS:

- **Monday, January 12 - Friday, February 6:**
All lots will be available for viewing, please call ahead to make arrangements
- **Saturday, February 7:**
11:00 AM - Pre-sale Viewing
12:00 PM - Lunch will be Served
1:00 PM - SALE STARTS

AUCTIONEER:

Dustin Carter 712.898.9972

SALE REPRESENTATIVES:

Tony Heins, Western Ag Reporter.....701.400.4435
Kelly Klein, Tri-State Livestock..... 701.320.5817

SALE DAY PHONES:

701.448.2408
701.448.2409

DIRECTIONS TO THE RANCH:

13 Miles North of Turtle Lake on Highway 41 or 8 Miles South of Junction of Hwy 53/41. Turn East on County Road 6E and go 1 mile then turn south onto tree lined driveway, this will lead you into the yard.

ONLINE BIDDING:

Sale videos and online bidding available on DVAuction, www.dvauction.com. Please register early to ensure you are an approved bidder.



ANNOUNCEMENTS:

A supplement sheet will be available on sale day with updated information, corrections, & sale order. This sheet and any announcements made on sale day from the auction block during the sale, will take precedence over printed material associated with the sale.

BULL DEVELOPMENT & DELIVERY:

Once complete payment has been made and bulls have been semen tested in mid-April, we will assist buyers in coordinating to make the most economical trucking arrangements possible. Please contact Trey or Durnell for more information. During testing, we will administer pre-breeding shots, worm, and pour your bull. If you plan to leave your purchase in our care, it is suggested that all lots be insured. Any lot that remain after May 1st will be subject to yardage fees.

GUARANTEE:

All bulls are guaranteed breeders and healthy on sale day. The purchaser shall let the seller know within 6 months of purchase date if bull is unsatisfactory. Bulls will be returned at buyer's expense. The seller has the right to semen check the bull. If the bull is found to be unsatisfactory, the seller will replace with a bull of equal value agreed upon by both parties, or return purchase price. In no instance shall the seller be responsible for more than the purchase price.

HERD HEALTH:

All lots have been vaccinated according to our complete vaccination program recommended by our local veterinarian. The heifer lots have been bangs vaccinated with the bred heifers receiving both doses of ScourGuard 4KC.

INSURANCE:

Bruce Mclean, Heritage Insurance.....701.833.4704

As soon as an animal is purchased, it becomes the responsibility of the buyer. Insurance will be available on sale day.

TERMS & CONDITIONS:

All cattle sell under the recommended Sale Terms and Conditions of the American Simmental Association, these terms are available by request. All sales are final.

SEMEN INTEREST:

KSR reserves the right to collect 100 units of semen on all bulls sold. Bulls will be collected at buyer's convenience and seller's expense.

LIABILITY:

Anyone attending the sale attends at their own risk. Sellers, facility owners, nor the sales team will not be held responsible for any personal injury from attending the sale.



Performance matters most when it shows beyond your own pasture. We believe one of the strongest endorsements of our program is performance data generated outside our own operation. That’s why we were proud to participate in the **27th Annual Dakota Feeder Calf Show**, hosted by the **NDSU Extension Research Facility in Carrington, North Dakota**. This program provides real-world, third-party results that you can trust—and we’re excited to share how our steers performed.

Our cattle didn’t just compete – they rose to the top of the competition, earning:

TOP PROFIT GROUP OF STEERS

TOP GAINING STEER

2ND PLACE SALE CALF

2ND & 5TH PLACE CARCASS



We entered **two pens of steers in October 2024**, which were fed by NDSU through **June 2025**. Both groups excelled in growth, efficiency, and end-product value.

<i>PEN NUMBER</i>	<i>AVERAGE ENTERING WEIGHT</i>	<i>ADG</i>	<i>AVERAGE FINISHING WEIGHT</i>	<i>TOP ADG</i>
1	659	4.38	1718	4.57
2	670	4.4	1735	4.79



Across both pens, the **average carcass value was \$3,905**, reinforcing that these cattle don’t just gain – **THEY CONVERT AND PAY.**

In addition, the two sale calves we entered **gained over 4.1lbs per day** and delivered strong carcass results.

WHAT DOES THIS MEAN FOR YOU?

It means genetics that perform **beyond the ranch gate**. These results come from cattle fed, managed, and evaluated by an independent program, **providing true, unbiased data** you can apply directly to your operation. Whether your focus is gain, carcass value, or overall profitability, these cattle are built to deliver.

We’re proud of the results, confident in the data, and excited about the value these genetics can add to your bottom line.

TOP TEN RANKING BULLS

CALVING EASE

Lot Number	Name	EPD
11	KSR 472N	21.1
9	KSR 496N	18.5
7	KSR 417N	17.5
10	KSR 442N	17.5
21	KSR 199N	17.5
8	KSR 404N	15.9
36	KSR 1796N	15.3
20	KSR 910N	14.4
31	KSR 967N	14.1
6	KSR 499N	13.9

BIRTH WEIGHT

Lot Number	Name	EPD
11	KSR 472N	-3.8
9	KSR 496N	-2.9
21	KSR 199N	-1.7
10	KSR 442N	-1.6
33	KSR 1898N	-1.5
17	KSR 395N	-1.4
7	KSR 417N	-1.3
26	KSR 147N	-1.1
8	KSR 404N	-1
31	KSR 967N	-0.6

WEANING WEIGHT

Lot Number	Name	EPD
35	KSR 1112N	112.7
22	KSR 223N	109.3
4	KSR 38N	107.8
5	KSR 118N	106.3
23	KSR 928N	103.7
30	KSR 108N	100.6
2	KSR 28N	99.1
7	KSR 417N	96.3
1	KSR 288N	95.5
15	KSR 167N	95.3

YEARLING WEIGHT

Lot Number	Name	EPD
35	KSR 1112N	177
1	KSR 288N	172.1
4	KSR 38N	169.6
22	KSR 223N	167.1
5	KSR 118N	166.8
23	KSR 928N	165.1
30	KSR 108N	155.9
2	KSR 28N	155.4
7	KSR 417N	150.4
37	KSR 1827N	149.7

ADG

Lot Number	Name	EPD
35	KSR 1112N	0.4
4	KSR 38N	0.38
5	KSR 118N	0.38
23	KSR 928N	0.38
37	KSR 1827N	0.38
36	KSR 1796N	0.37
22	KSR 223N	0.36
1	KSR 288N	0.36
30	KSR 108N	0.35
2	KSR 28N	0.35

API

Lot Number	Name	EPD
11	KSR 472N	176.9
7	KSR 417N	175.1
17	KSR 395N	175
8	KSR 404N	164.5
21	KSR 199N	161.2
31	KSR 967N	160.9
29	KSR 109N	159.3
1	KSR 288N	157
3	KSR 734N	156.4
27	KSR 280N	155.6

The EPDs listed were pulled on 01/05/2026, please note EPDs may change from the time the sale catalog is printed.



LOT 1

1 | KSR 288N • PB SIMMENTAL
• GENOMIC ENHANCED

ASA: 4580967 | *Homo-Black, Homo-Polled* | BD: 2/20/2025

LCDR FAVOR 149F HPF QUANTUM LEAP Z952
LCDR DILIGENCE 215J X **KSR JOEY 288J**
 Lcdr MS GIA 5G KSR DOLLEY 788D

Act. BW 87 | **Act. WW** 830 | **Adj. YW** 1371

% EPDS	CE	BW	WW	YW	ADG	MCE	MILK	API	TI
	4.3	2.9	95.5	172.1	0.36	4.1	16.3	157	97.4
95	85	10	1	4	80	95	25	10	



LCDR DILIGENCE 215J

SIRE OF LOTS 1-5

Lot 1 has been on our radar from the very beginning. He is stout, soggy, and powerful — a true growing machine that continues to impress as he develops. Landing in multiple of our Top Ten rankings, he is a bull that simply stands out and will make an immediate impact in any program



LOT 2



LOT 3



LOT 4



LOT 5

That same mass and growth carries through to his half brothers. We have been very pleased with their sire and believe you will be as well.

2 KSR 28N

•PB SIMMENTAL
•GENOMIC ENHANCED

ASA: 4580891 | *Homo-Black, Homo-Polled* | BD: 2/27/2025

LCDR FAVOR 149F X RUBYS TURNPIKE 771E
LCDR DILIGENCE 215J X **KSR FAITH 28G**
 Lcdr MS GIA 5G KSR KERA 328Z

Act. BW 96 Act. WW 718 Adj. YW 1119

% EPDS	CE	BW	WW	YW	ADG	MCE	MILK	API	TI
	5.8	3	99.1	155.4	0.35	1.9	24.8	154.1	93.2
90	85	5	4	10	99	40	20	20	

3 KSR 734N

•3/4 SIMMENTAL
•GENOMIC ENHANCED

ASA: 4581070 | *Homo-Black, Homo-Polled* | BD: 3/1/2025

LCDR FAVOR 149F X W/C UNITED 956Y
LCDR DILIGENCE 215J X **KSR DEANNA 734D**
 Lcdr MS GIA 5G KSR BREEZE 549B

Act. BW 103 Act. WW 790 Adj. YW 1245

% EPDS	CE	BW	WW	YW	ADG	MCE	MILK	API	TI
	10.1	0.8	92.1	145.5	0.33	5.5	24.4	156.4	91.5
65	70	15	15	20	75	45	20	25	

4 KSR 38N

•PB SIMMENTAL
•GENOMIC ENHANCED

ASA: 4580894 | *Homo-Black, Homo-Polled* | BD: 2/24/2025

LCDR FAVOR 149F X QB POWER POINT C521
LCDR DILIGENCE 215J X **KSR TRIUMPH 38G**
 Lcdr MS GIA 5G KSR TRIUMPH 18W

Act. BW 96 Act. WW 780 Adj. YW 1248

% EPDS	CE	BW	WW	YW	ADG	MCE	MILK	API	TI
	4.6	3.7	107.8	169.6	0.38	0.9	29.9	141.8	97
95	90	1	1	2	99	15	35	10	

5 KSR 118N

•3/4 SIMMENTAL
•GENOMIC ENHANCED

ASA: 4580916 | *Homo-Black, Homo-Polled* | BD: 2/27/2025

LCDR FAVOR 149F X CCR GRAVITY 9064A
LCDR DILIGENCE 215J X **KSR JADE 118H**
 Lcdr MS GIA 5G KSR JADE 258Y

Act. BW 92 Act. WW 792 Adj. YW 1265

% EPDS	CE	BW	WW	YW	ADG	MCE	MILK	API	TI
	4.5	2.8	106.3	166.8	0.38	3.5	24.9	130.7	92.9
99	95	1	2	5	95	45	60	20	



LOT 6



JC MR PONTIAC D114K

SIRE OF LOTS 6-13

SERVICE SIRE OF LOTS 38-39, 41-43, 46



LOT 7

6 KSR 499N •3/4 SIMMENTAL
• GENOMIC ENHANCED

ASA: 4581047 | *Homo-Black, Homo-Polled* | BD: 2/23/2025

GIBBS 9114G ESSENTIAL
JC MR PONTIAC D114K X
FSCR D114 LUCILLE B089XP

JSF GENTRY G911
KSR LIZZIE 499L
KSR HARLOW 199H

Act. BW 85 | Act. WW 748 | Adj. YW 1231

% EPDS	CE	BW	WW	YW	ADG	MCE	MILK	API	TI
	13.9	0.4	86.2	134.7	0.3	8.3	29.4	147.7	89.4
30	60	25	30	35	30	15	35	30	

7 KSR 417N •PB SIMMENTAL
• GENOMIC ENHANCED

ASA: 4581016 | *Homo-Black, Homo-Polled* | BD: 2/22/2025

GIBBS 9114G ESSENTIAL
JC MR PONTIAC D114K X
FSCR D114 LUCILLE B089XP

R&R KRJ GOLDEN BOOK H0135
KSR LUCY 417L
KRJ J117

Act. BW 80 | Act. WW 682 | Adj. YW 1100

% EPDS	CE	BW	WW	YW	ADG	MCE	MILK	API	TI
	17.5	-1.3	96.3	150.4	0.33	11.8	23.8	175.1	103.1
3	15	10	10	10	1	45	5	3	

The Pontiac Sons — wow is about all we can say. We used Pontiac on heifers for the first time last year and could not be more pleased with the results. With 28 calves averaging a 75 lb birth weight, they came easy and grew quickly, showing the kind of consistency and performance we value. This group is loaded with quality, and there are some real standouts you'll want to study closely on sale day.



LOT 8



LOT 9

8 KSR 404N

•PB SIMMENTAL
•GENOMIC ENHANCED

ASA: 4581010 | *Hetero-Black, Homo-Polled* | BD: 2/21/2025

GIBBS 9114G ESSENTIAL
JC MR PONTIAC D114K X SAS ANTIDOTE F046
FSCR D114 LUCILLE B089XP **KSR LIBBY 404L**
KSR CALI 604C

Act. BW 79 Act. WW 726 Adj. YW 1175

% EPDS	CE	BW	WW	YW	ADG	MCE	MILK	API	TI
	15.9	-1	88	133.9	0.28	8.2	29	164.5	94
	10	15	25	25	35	15	15	15	15

9 KSR 496N

•3/4 SIMMENTAL
•GENOMIC ENHANCED

ASA: 4581045 | *Homo-Black, Homo-Polled* | BD: 2/19/2025

GIBBS 9114G ESSENTIAL
JC MR PONTIAC D114K X GQ CORNERSTONE F56
FSCR D114 LUCILLE B089XP **KSR LEE 496L**
KSR BOBBIE 596B

Act. BW 75 Act. WW 616 Adj. YW 1033

% EPDS	CE	BW	WW	YW	ADG	MCE	MILK	API	TI
	18.5	-2.9	65	92.1	0.17	11.5	25.4	144.4	77.1
	10	15	90	95	99	3	40	35	70

10 KSR 442N

•3/4 SIMMENTAL
•GENOMIC ENHANCED

ASA: 4581026 | *Homo-Black, Homo-Polled* | BD: 2/19/2025

GIBBS 9114G ESSENTIAL
JC MR PONTIAC D114K X JSF GENTRY G911
FSCR D114 LUCILLE B089XP **KSR LANA 442L**
KSR NAN 542B

Act. BW 73 Act. WW 644 Adj. YW 1074

% EPDS	CE	BW	WW	YW	ADG	MCE	MILK	API	TI
	17.5	-1.6	77.2	120.3	0.26	8.6	26.1	147.2	82.3
	10	25	55	55	60	25	30	35	55



LOT 11



LOT 13

11 KSR 472N •PB SIMMENTAL
•GENOMIC ENHANCED

ASA: 4581034 | *Homo-Black, Homo-Polled* | BD: 2/15/2025

GIBBS 9114G ESSENTIAL
JC MR PONTIAC D114K X
FSCR D114 LUCILLE B089XP

DMF EPIC E27
KSR LINDY 472L
KSR FABULOUS 972F

Act. BW 65 Act. WW 650 Adj. YW 1065

% EPDS	CE	BW	WW	YW	ADG	MCE	MILK	API	TI
	21.1	-3.8	82.5	122.9	0.25	11	27.5	176.9	94.9
	1	2	40	45	50	1	25	5	15

13 KSR 14N •PB SIMMENTAL
•GENOMIC ENHANCED

ASA: 4580886 | *Hetero-Black, Homo-Polled* | BD: 2/27/2025

GIBBS 9114G ESSENTIAL
JC MR PONTIAC D114K X
FSCR D114 LUCILLE B089XP

QB BLUEPRINT D47
KSR RAE 14G
ZF 214Z LADY RAE

Act. BW 98 Act. WW 712 Adj. YW 1093

% EPDS	CE	BW	WW	YW	ADG	MCE	MILK	API	TI
	10.5	1.2	85.8	128.2	0.25	8	20.7	138.9	86.7
	45	50	30	35	50	20	70	45	35

12 KSR 300N •PB SIMMENTAL
•GENOMIC ENHANCED

ASA: 4580970 | *Homo-Black, Homo-Polled* | BD: 2/19/2025

GIBBS 9114G ESSENTIAL
JC MR PONTIAC D114K X
FSCR D114 LUCILLE B089XP

KSR LEGACY 119G
KSR KIT 300K
KSR CELINE 10G

Act. BW 84 Act. WW 694 Adj. YW 1061

% EPDS	CE	BW	WW	YW	ADG	MCE	MILK	API	TI
	13.8	-0.6	84.5	128.6	0.27	8.8	26.5	155.3	89.4
	15	20	35	35	40	10	30	20	25

Rounding out the Pontiac sons are these three, carrying the same depth and quality as their brothers. Each of them offers the same combination of performance, power, and structural integrity that makes this sire group so impressive. Come check them out!



LOT 14



LOT 15



LOT 16

The mixed-sire group offers plenty of versatility and options for any program. Representing a variety of sires, these bulls bring a range of types and pedigrees to the lineup. They combine performance, balance, and quality, making them suitable for a wide range of production goals. Whether you're looking for growth, style, or consistency, this set provides something for nearly every operation.

14 KSR 649N

•PB SIMMENTAL
•GENOMIC ENHANCED

ASA: 4581061 | *Homo-Black, Homo-Polled* | BD: 2/26/2025

TJ MAIN EVENT 503B
CDI MAINLINE 265D
HOOK'S BEYONCE 82B



LRS UNLIMITED 752A
KSR CRISTA 649C
KSR EDEN 418A

Act. BW 106 Act. WW 814 Adj. YW 1173

% EPDs	CE	BW	WW	YW	ADG	MCE	MILK	API	TI
	2.4	4.7	94.8	143.2	0.31	4.3	31	121.7	83.8
	99	95	10	15	20	80	10	65	45

15 KSR 167N

•PB SIMMENTAL
•GENOMIC ENHANCED

ASA: 4580932 | *Hetero-Black, Homo-Polled* | BD: 3/1/2025

KCC1 EXCLUSIVE 116E
LTS HOTZ TOP SHELF 5J
LTS HOTZ MS LIBERTY 13F



QB POWER POINT C521
KSR CHYRSTAL 167H
KSR ERIN 867E

Act. BW 95 Act. WW 752 Adj. YW 1206

% EPDs	CE	BW	WW	YW	ADG	MCE	MILK	API	TI
	8.1	2.9	95.3	142.8	0.29	4.3	24.4	122	86.7
	70	85	10	15	30	80	40	65	35

16 KSR 136N

•PB SIMMENTAL
•GENOMIC ENHANCED

ASA: 4580922 | *Homo-Black, Homo-Polled* | BD: 2/24/2025

RUBYS TURNPIKE 771E
KRJ DAKOTA OUTLAW G974
BRKC DAPHNE DY37



CNN PAYS TO DREAM 702E
KSR HEAVENLY 136H
KSR FAYE 938F

Act. BW 98 Act. WW 740 Adj. YW 1180

% EPDs	CE	BW	WW	YW	ADG	MCE	MILK	API	TI
	9.4	3.1	91	133.3	0.27	6.1	25.9	140	88.3
	55	85	15	25	40	45	30	40	30

17 KSR 395N

•PB SIMMENTAL
•GENOMIC ENHANCED

ASA: 4581003 | *Homo-Black, Homo-Polled* | BD: 3/13/2025

HOOK'S EAGLE 6E
RFS TOP FLIGHT L19
RFS MISS J153



RCR STETSON T17
KSR SUMMER 395Z
KSR LINDA 195X

Act. BW 82 Act. WW 628 Adj. YW 1090

% EPDs	CE	BW	WW	YW	ADG	MCE	MILK	API	TI
	13.9	-1.4	69	99.5	0.19	8.6	26.4	175	86.9
	15	15	90	90	90	10	30	5	35



LOT 18



LOT 19



CLEMSON ELITE 41J

SIRE OF LOTS 18-20



LOT 20

18 KSR 821N

•PB SIMMENTAL
•GENOMIC ENHANCED

ASA: 4581080 | *Homo-Black, Homo-Polled* | BD: 2/24/2025

WLE COPACETIC E02
CLEMSON ELITE 41J
AK/NDS CHRISTAL'S LEGACY



CCR SURE NUFF 6055Y
KSR EXMAE 821E
KSR POWERBALL 721S

Act. BW 102 | Act. WW 714 | Adj. YW 1220

% EPDS	CE	BW	WW	YW	ADG	MCE	MILK	API	TI
	6.4	2.8	76.6	117.8	0.25	4.8	15.5	119	73
	85	80	60	55	50	70	95	70	80

19 KSR 910N

•PB SIMMENTAL
•GENOMIC ENHANCED

ASA: 4581092 | *Hetero-Black, Homo-Polled* | BD: 3/1/2025

WLE COPACETIC E02
CLEMSON ELITE 41J
AK/NDS CHRISTAL'S LEGACY



KSR ECLIPSE 107B
KSR FRIGG 910F
KSR CELINA 610C

Act. BW 90 | Act. WW 702 | Adj. YW 1127

% EPDS	CE	BW	WW	YW	ADG	MCE	MILK	API	TI
	14.4	0.5	82.5	129.5	0.29	8.1	22.7	144.5	86.3
	15	40	40	30	30	15	55	35	35

20 KSR 301N

•PB SIMMENTAL
•GENOMIC ENHANCED

ASA: 4580971 | *Homo-Black, Homo-Polled* | BD: 2/22/2025

WLE COPACETIC E02
CLEMSON ELITE 41J
AK/NDS CHRISTAL'S LEGACY



KBHR HIGH ROAD E283
KSR KIM 301K
KSR FLORA 901F

Act. BW 88 | Act. WW 696 | Adj. YW 1117

% EPDS	CE	BW	WW	YW	ADG	MCE	MILK	API	TI
	12.8	-0.6	77.8	117.2	0.25	7.4	20.6	142.7	83.8
	25	20	55	55	50	25	70	35	45

The Elite Group – this is a smaller offering, but the quality is undeniable. Ten of the fifteen calves born were heifers, most of which have been retained in the replacement pen, highlighting the sire's maternal strength. His bulls averaged an 85 lb birth weight and consistently caught our eye in the pasture for their power, bone, and structural integrity. This is a solid set of half-brothers that combines growth, substance, and the kind of soundness that will make them valuable herd sires.



21 KSR 199N

•3/4 SIMMENTAL
• GENOMIC ENHANCED

ASA: 4580938 | *Homo-Black, Homo-Polled* | BD: 3/7/2025

CLRS GENERAL LEE 655G

CDI MAINLINE 265D

CLRS LIEUTENANT 406L X

KSR HARLOW 199H

CLRS BEYOND 406 B

KSR BRITT 589B

Act. BW 65 Act. WW 658 Adj. YW 1035 TWIN BULL

% EPDS	CE	BW	WW	YW	ADG	MCE	MILK	API	TI
	17.5	-1.7	79.6	129.3	0.31	8.2	29	161.2	89.6
10	25	45	35	30	30	15	15	30	

22 KSR 223N

•PB SIMMENTAL
• GENOMIC ENHANCED

ASA: 4580949 | *Homo-Black, Homo-Polled* | BD: 3/12/2025

CLRS GENERAL LEE 655G

GQ CORNERSTONE F56

CLRS LIEUTENANT 406L X

KSR JANINE 223J

CLRS BEYOND 406 B

KSR DELILAH 723D

Act. BW 105 Act. WW 750 Adj. YW 1063

% EPDS	CE	BW	WW	YW	ADG	MCE	MILK	API	TI
	1.7	5.4	109.3	167.1	0.36	4.9	25.4	126.2	95.4
99	99	1	1	4	65	35	60	15	

23 KSR 928N

•PB SIMMENTAL
• GENOMIC ENHANCED

ASA: 4581097 | *Homo-Black, Homo-Polled* | BD: 3/19/2025

CLRS GENERAL LEE 655G

W/C UNITED 956Y

CLRS LIEUTENANT 406L X

KSR ELEGANT 928F

CLRS BEYOND 406 B

KSR SHEAR ELEGANCE 728D

Act. BW 108 Act. WW 740 Adj. YW 1184

% EPDS	CE	BW	WW	YW	ADG	MCE	MILK	API	TI
	5.6	2.3	103.7	165.1	0.38	3.5	28	151.3	96.6
90	75	2	2	2	90	20	25	10	

The younger bulls may be a bit fresher in age, but they do not disappoint. They grow steadily, maintain their attractive appearance, and move well, demonstrating the balance and functionality we value. Each of these bulls shows the potential to make an impact in any program, and they are definitely ones you'll want to study closely on sale day.



LOT 24

24 KSR 184N

•PB SIMMENTAL
•GENOMIC ENHANCED

ASA: 4580934 | Red, Homo-Polled, Non-Diluter | BD: 3/17/2025

ROCKIN H CAPTIVATE J75
RFS BALANCE L141
E60



RFS END ZONE E78
KSR HOLLAND 184H
KSR DESIREE 782D

Act. BW 84 | Act. WW 636 | Adj. YW 1089

% EPDs	CE	BW	WW	YW	ADG	MCE	MILK	API	TI
	12	0.4	86.5	129.4	0.27	6.7	29.4	142.3	87.9
	30	35	25	30	40	35	15	35	30

25 KSR 816N

•PB SIMMENTAL
•GENOMIC ENHANCED

ASA: 4581079 | Red, Homo-Polled, Non-Diluter | BD: 3/3/2025

CNS DREAM ON L186
GCF/ZEIS MR COMMANDER
ZEIS MISS FORTUNE J79



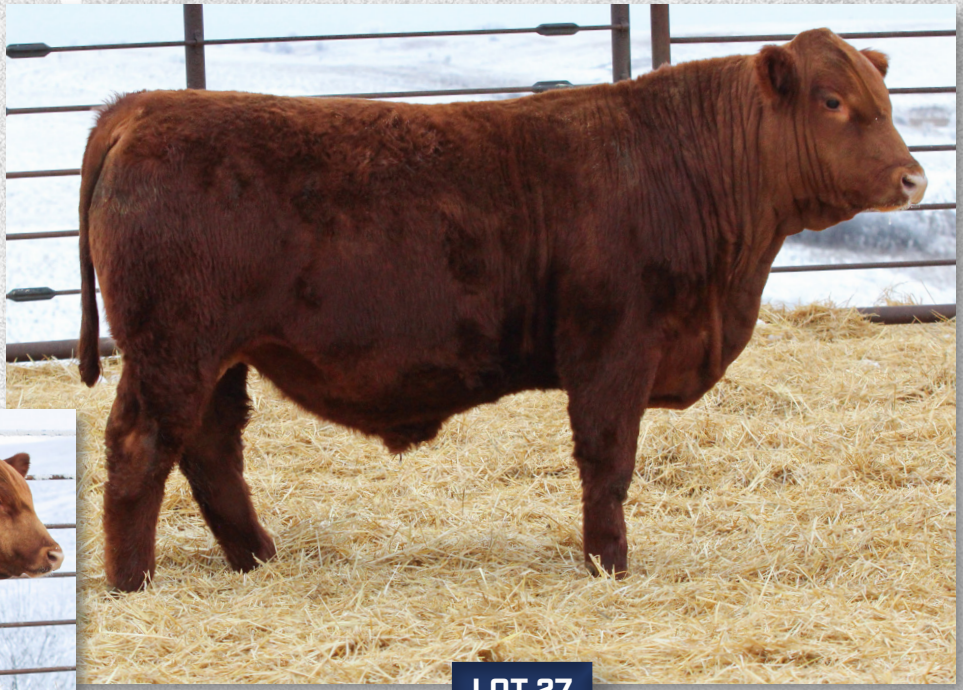
TNT WHISKY RIVER B298
KSR EVITA 816E
KSR PRETTY GIRL 316Z

Act. BW 80 | Act. WW 618 | Adj. YW 1000

% EPDs	CE	BW	WW	YW	ADG	MCE	MILK	API	TI
	13.4	-0.5	62.5	93.3	0.19	6.1	16.2	134.1	73.3
	20	25	99	95	90	45	95	45	80



LOT 26



LOT 27

26 KSR 147N

•1/2 SM, 1/2 AR
• GENOMIC ENHANCED

ASA: 4580927 | Red, Homo-Polled, Non-Diluter | BD: 2/24/2025

SIX MILE JOHN WICK 882E
SIX MILE PRIVATE STOCK 32H
RED SIX MILE MS FRADO 32F



RFS END ZONE E78
KSR RUBY 147H
KSR PEANUT 547B

Act. BW 88 Act. WW 740 Adj. YW 1133

% EPDS	CE	BW	WW	YW	ADG	MCE	MILK	API	TI
	9.8	-1.1	73.7	105.2	0.21	6.7	29.7	120.3	74.4
	70	35	65	80	90	55	10	70	80

27 KSR 280N

•PB SIMMENTAL
• GENOMIC ENHANCED

ASA: 4580964 | Red, Homo-Polled, Non-Diluter | BD: 3/20/2025

ROCKIN H CAPTIVATE J75
LCDR CAPTAIN 184L
CDI MS BEEF KING 11Z



RFS END ZONE E78
KSR JIFFY 280J
KSR FREYA 980F

Act. BW 84 Act. WW 667 Adj. YW 1092

% EPDS	CE	BW	WW	YW	ADG	MCE	MILK	API	TI
	13.5	-0.5	87.3	118.7	0.2	6.3	29.3	155.6	92.6
	20	25	25	50	85	40	15	20	20

28 KSR 295N

•PB SIMMENTAL
• GENOMIC ENHANCED

ASA: 4580968 | Red, Homo-Polled, Non-Diluter | BD: 3/23/2025

ROCKIN H CAPTIVATE J75
LCDR CAPTAIN 184L
CDI MS BEEF KING 11Z



KSR CAVALIER 316D
KSR JUEL 295J
KSR FAWN 955F

Act. BW 90 Act. WW 645 Adj. YW 1086

% EPDS	CE	BW	WW	YW	ADG	MCE	MILK	API	TI
	10.9	1.8	85	129	0.28	7.5	29.2	137.4	84.3
	40	65	30	30	35	25	15	45	40

Here is the set of red bulls — a small group, but mighty. They bring depth and diversity to the lineup, offering a range of options for any program. Dark cherry red in color, they combine impressive style, bone, and functionality. These bulls are built to perform and are ready to make an immediate impact in your herd.



LOT 29

29 KSR 109N

•PB SIMMENTAL
•GENOMIC ENHANCED

ASA: 4580913 | *Homo-Black, Homa-Polled* | BD: 2/24/2025

CLRS GUARDIAN 317G X CDI MAINLINE 265D
HL TOMMY BOY K65 X **KSR DAWN 109H**
 HL MS SMOOTH CRIMINAL H60 KSR EVE 119X

Act. BW 92 Act. WW 714 Adj. YW 1158

% EPDS	CE	BW	WW	YW	ADG	MCE	MILK	API	TI
	12.7	-0.5	87.9	132	0.29	6.7	18.9	159.3	92.9
	25	25	25	25	30	35	85	15	20



HL TOMMY BOY K65

SIRE OF LOTS 29-31

30 KSR 108N

•PB SIMMENTAL
•GENOMIC ENHANCED

ASA: 4580912 | *Homo-Black, Hetero-Polled* | BD: 2/26/2025

CLRS GUARDIAN 317G X HOOK'S BALTIC 17B
HL TOMMY BOY K65 X **KSR HOPE 108H**
 HL MS SMOOTH CRIMINAL H60 KSR ATHENA 409A

Act. BW 96 Act. WW 748 Adj. YW 1103

% EPDS	CE	BW	WW	YW	ADG	MCE	MILK	API	TI
	9	2.4	100.6	155.9	0.35	6	18.6	150.1	93.6
	60	75	4	3	10	45	85	25	15

31 KSR 967N

•PB SIMMENTAL
•GENOMIC ENHANCED

ASA: 4581104 | *Homo-Black, Homa-Polled* | BD: 2/24/2025

CLRS GUARDIAN 317G X QB POWER POINT C521
HL TOMMY BOY K65 X **KSR FRONT LADY 967F**
 HL MS SMOOTH CRIMINAL H60 KSR SHANIA 67W

Act. BW 81 Act. WW 748 Adj. YW 1082

% EPDS	CE	BW	WW	YW	ADG	MCE	MILK	API	TI
	14.1	-0.6	91.4	143.2	0.33	6.3	26.7	160.9	94.8
	15	20	15	15	10	40	25	15	15

Here is the set of Tommy Boy sons! While they didn't necessarily show their best on picture day, they will catch your eye in the pen. As we begin to use Tommy Boy more extensively, the more impressive he is. His daughters are outstanding, these half-brothers are built to sire cows that will perform and last for years.



HWK KEYSTONE K206

SIRE OF LOTS 32-34



LOT 33



LOT 32

We purchased this bull from Hawkins Cattle two years ago and have loved him ever since. His sons combine style, muscle, and temperament — they are as docile as they are impressive. A couple may be on the younger side, but we are excited to watch them grow and see the impact they will have in your herd.

33 KSR 1898N

•1/2 SM, 1/2 AN
• GENOMIC ENHANCED

ASA: 4581131 | *Homo-Black, Homo-Polled* | BD: 3/14/2025

JSF GENTRY G911 HF SMOOTH 197C
HWK KEYSTONE K206 X **KSR EVANKA 1898E**
 HWK EPIC ESCAPE G904 KSR BRANNA 598B

Act. BW 90 Act. WW 656 Adj. YW 1174

% EPDS	CE	BW	WW	YW	ADG	MCE	MILK	API	TI
	10.9	-1.5	75.6	122.2	0.29	5.3	21.3	139.5	84.6
60	30	60	50	40	80	75	45	45	

32 KSR 246N

•1/2 SM, 1/2 AN
• GENOMIC ENHANCED

ASA: 4580955 | *Homo-Black, Homo-Polled* | BD: 3/17/2025

JSF GENTRY G911 HART RAMPAGE 7213
HWK KEYSTONE K206 X **HCC EISA EVERGREEN 0246-0706**
 HWK EPIC ESCAPE G904 HCC EISA EVERGREEN 5706-0415

Act. BW 98 Act. WW 676 Adj. YW 1152

% EPDS	CE	BW	WW	YW	ADG	MCE	MILK	API	TI
	8.9	1.9	81.8	130.2	0.31	5.9	25.7	119.7	80.5
75	85	40	35	30	70	35	75	60	

34 KSR 392N

•PB SIMMENTAL
• GENOMIC ENHANCED

ASA: 4581002 | *Homo-Black, Homo-Polled* | BD: 2/23/2025

JSF GENTRY G911 LRS TOP TEN 104A
HWK KEYSTONE K206 X **KSR KEEN 392K**
 HWK EPIC ESCAPE G904 KSR HIGGLY 192H

Act. BW 79 Act. WW 672 Adj. YW 1033

% EPDS	CE	BW	WW	YW	ADG	MCE	MILK	API	TI
	10.4	-0.6	78.1	112.9	0.21	5.8	24.5	129.3	79
45	20	55	65	80	50	40	55	60	



LOT 35



LOT 36



CONNELY COMMERCE

SIRE OF LOTS 35-37



LOT 37

35 KSR 112N

•PB ANGUS
•GENOMIC ENHANCED

ASA: 4581113 | *Homo-Black, Homo-Polled* | BD: 2/22/2025

G A R SUNBEAM
CONNELY COMMERCE X G A R ASHLAND
AVIRA OF CONANGA 814R **KSR HASHLAND 112H**
KSR ERICA 3912A

Act. BW 105 | Act. WW 752 | Adj. YW 1236

% EPDS	CE	BW	WW	YW	ADG	MCE	MILK	API	TI
	10.9	3.9	112.7	177	0.4	5.5	21.6	127.8	91.7
	60	99	1	1	3	75	70	65	25

36 KSR 1796N

•PB ANGUS
•GENOMIC ENHANCED

ASA: 4581127 | *Homo-Black, Homo-Polled* | BD: 2/21/2025

G A R SUNBEAM
CONNELY COMMERCE X F A R TIGER 210A
AVIRA OF CONANGA 814R **KSR DACIA 1796D**
KSR BLACKBIRD 496A

Act. BW 90 | Act. WW 696 | Adj. YW 1132

% EPDS	CE	BW	WW	YW	ADG	MCE	MILK	API	TI
	15.3	-0.2	85.1	145.8	0.37	9.6	24.6	129.9	79.2
	20	50	30	15	10	15	45	60	65

His maternal sister sells as lot 47

37 KSR 1827N

•7/8 ANGUS
•GENOMIC ENHANCED

ASA: 4581128 | *Homo-Black, Homo-Polled* | BD: 2/24/2025

G A R SUNBEAM
CONNELY COMMERCE X HF SMOOTH 197C
AVIRA OF CONANGA 814R **KSR ELAINE 1827E**
KSR CANDY 1627C

Act. BW 100 | Act. WW 712 | Adj. YW 1183

% EPDS	CE	BW	WW	YW	ADG	MCE	MILK	API	TI
	11.4	1.8	90.2	149.7	0.38	7.3	17.7	151.1	91.8
	55	85	15	10	5	45	95	25	25

Here is the Angus set, sired by the popular Connealy Commerce. We love the design and style of these bulls – they are soggy in the middle, thick on top, and attractive all over. They grow well and combine the kind of substance and presence that makes them stand out in any pen.

KSR FEMALES





LOT 38

This larger group of bred heifers is bred to Pontiac, a bull we have been so pleased with. These ladies are a solid set – sound, attractive, and functional – and they carry the consistency and quality we value. With the performance and maternal strength of their sire, they are built to make productive, long-lasting cows.

38 KSR 4252M • PB SIMMENTAL • GENOMIC ENHANCED

ASA: 4424194 | *Hetero-Black, Homo-Polled* | BD: 2/17/2024

RUBYS TURNPIKE 771E X RUBYS TURNPIKE 771E
 KRJ DAKOTA OUTLAW G974 X KRJ J1152
 BRKC DAPHNE DY37 BRKC DAPHNE DY37

Act. BW 50 Act. WW 612 TWIN COW

% EPDS	CE	BW	WW	YW	ADG	MCE	MILK	API	TI
	7.5	2.5	100.7	155.9	0.34	6.2	21.7	124.6	88
	75	75	4	4	10	45	65	60	30

AI safe with JC MR Pontiac D114K heifer calf due on 2/21.
 Pasture exposed to KBHR Bismarck L074 on 5/25-7/28.



LOT 40

40 KSR 4285M • PB SIMMENTAL • GENOMIC ENHANCED

ASA: 4423995 | *Homo-Black, Homo-Polled* | BD: 2/20/2024

RUBYS TURNPIKE 771E X QB POWER POINT C521
 KRJ DAKOTA OUTLAW G974 X KSR DOLLY 95G
 BRKC DAPHNE DY37 BRKC BRANDI 595B

Act. BW 75 Act. WW 680

% EPDS	CE	BW	WW	YW	ADG	MCE	MILK	API	TI
	8.9	2.5	106.8	167.4	0.38	7.2	31.2	128.9	91.5
	65	75	1	1	2	25	10	55	20

Bull bred with KBHR Bismarck L076 bull calf due on 3/9.
 Pasture exposed 5/25-7/28.

39 KSR 4231M • PB SIMMENTAL • GENOMIC ENHANCED

ASA: 4424008 | *Homo-Black, Homo-Polled* | BD: 2/27/2024

RUBYS TURNPIKE 771E X KSR WIDE LOAD 318E
 KRJ DAKOTA OUTLAW G974 X KSR HARPER 131H
 BRKC DAPHNE DY37 BRKC DIXIE 732D

Act. BW 88 Act. WW 670

% EPDS	CE	BW	WW	YW	ADG	MCE	MILK	API	TI
	6.6	3	96.9	145.4	0.3	5.2	28	120.9	85
	85	85	10	10	25	60	20	70	40

AI safe with JC MR Pontiac D114K bull calf due on 2/19.
 Pasture exposed to KBHR Bismarck L072 on 5/25-7/28.



JC MR PONTIAC D114K

SERVICE SIRE OF LOTS
38-39, 41-43, 46



LOT 41



LOT 42

41 KSR 4210M

• PB SIMMENTAL
• GENOMIC ENHANCED

ASA: 4424000 | *Homo-Black, Homo-Polled* | BD: 3/5/2024

KCC1 EXCLUSIVE 116E X KSR BOOST 5600
LTS HOTZ TOP SHELF 5J X KSR TILLIE 110H
LTS HOTZ MS LIBERTY 13F X KSR TILLIE 209Y

Act. BW | 106 | Act. WW | 698

% EPDS	CE	BW	WW	YW	ADG	MCE	MILK	API	TI
	0.6	6.2	108.7	161.6	0.33	1.6	19.6	98	84.1
	99	99	1	2	15	99	80	99	40

AI safe with JC MR Pontiac D114K bull calf due on 2/16.
Pasture exposed to KBHR Bismarck L071 on 5/25-7/28.

42 KSR 4236M

• PB SIMMENTAL
• GENOMIC ENHANCED

ASA: 4424139 | *Homo-Black, Homo-Polled* | BD: 2/19/2024

KCC1 EXCLUSIVE 116E X CCR COWBOY CUT 5048Z
LTS HOTZ TOP SHELF 5J X KSR DIXIE 736D
LTS HOTZ MS LIBERTY 13F X KSR LEGACY 837T

Act. BW | 75 | Act. WW | 604 | TWIN COW

% EPDS	CE	BW	WW	YW	ADG	MCE	MILK	API	TI
	9.8	1.5	82.2	114.6	0.2	6.9	16.7	132.8	79.4
	50	55	40	60	85	30	95	50	60

AI safe with JC MR Pontiac D114K heifer calf due on 2/21.
Pasture exposed to KBHR Bismarck L073 on 5/25-7/28.

43 KSR 4282M

• PB SIMMENTAL
• GENOMIC ENHANCED

ASA: 4424053 | *Homo-Black, Homo-Polled* | BD: 2/21/2024

WS ALL-AROUND Z35 X KRJ DAKOTA OUTLAW G974
OMF EPIC E27 X KSR JACKIE 282J
OMF TIME LESS B100 X KSR SWAG 382Z

Act. BW | 64 | Act. WW | 594

% EPDS	CE	BW	WW	YW	ADG	MCE	MILK	API	TI
	17.3	-1.4	84.8	126.5	0.26	8.1	24.7	146.7	85.5
	4	15	30	35	45	15	40	30	40

AI safe with JC MR Pontiac D114K heifer calf due on 2/16.
Pasture exposed to KBHR Bismarck L075 on 5/25-7/28.



LOT 44



RFS ELECTRIFY L46

SERVICE SIRE OF LOTS
44 & 45



LOT 45

This pair of red half-sisters is sired by Mossy Dak, a bull we have loved in our herd for his ability to add power, style, and consistency. While we have retained nearly all of his daughters, we are offering these two so someone else can enjoy a piece of that proven quality. They are attractive, functional, and built to last, and with a breeding to an up-and-coming, solid red bull, they have the potential to produce the kind of calves that continue to impress!

44 KSR 4233M

• 1/2 SM, 1/2 AR
• GENOMIC ENHANCED

ASA: 4424078 | Red, Homo-Polled | BD: 2/21/2024

SIX MILE JOHN WICK 882E X KSR DOUBLE DOWN 4267G
SIX MILE MOSSY OAK 175H X KSR KELSA 340K
RED SIX MILE MISS LARK 225E X KSR DORA 7400

Act. BW 81 | Act. WW 574

% EPDS	CE	BW	WW	YW	ADG	MCE	MILK	API	TI
	10	-1	68.4	102.1	0.21	3.9	28.3	130	77.5
	70	35	85	85	90	95	20	60	70

AI safe with RFS Electrify L46 bull calf due on 2/19.
Pasture exposed to KLC Commando 62 on 5/25-7/28.

45 KSR 4245M

• 1/2 SM, 1/2 AR
• GENOMIC ENHANCED

ASA: 4423981 | Red, Homo-Polled | BD: 2/23/2024

SIX MILE JOHN WICK 882E X IR IMPERIAL D948
SIX MILE MOSSY OAK 175H X KSR GAIL 45G
RED SIX MILE MISS LARK 225E X HSR MS WESTERN EDGE X645

Act. BW 80 | Act. WW 636

% EPDS	CE	BW	WW	YW	ADG	MCE	MILK	API	TI
	11.2	-2.2	76.5	117.1	0.25	8.3	31.6	145.8	84.1
	55	20	55	60	70	30	5	35	45

AI safe with RFS Electrify L46 heifer calf due on 2/23.
Pasture exposed to KLC Commando 62 on 5/25-7/28.

This pair of Angus half-sisters are truly special. They are attractive, grow well, and are exceptionally docile, reflecting the quality of their mothers, who are great cows in every sense. These heifers walk the walk and talk the talk, combining phenotype, performance, and temperament to make them standout additions to any herd.



LOT 47



LOT 46



KSR 1896M

HALF SIBS TO LOTS 46 & 47

2025 HIGH SELLING ANGUS BULL

46 KSR 4112M

• PB ANGUS
• GENOMIC ENHANCED

ASA: 4424214 | *Homo-Black, Homo-Polled* | BD: 2/20/2024

BASIN PAYWEIGHT 1682
DEER VALLEY GROWTH FUND X
DEER VALLEY RITA 36113

S A V PRIORITY 7283
KSR ERICA 3912A
S A V ERICA 1480

Act. BW 80 Act. WW 650

% EPDs	CE	BW	WW	YW	ADG	MCE	MILK	API	TI
	13.2	0.7	103.6	167.9	0.4	8.1	27	112	82
	35	65	2	2	3	35	25	85	55

AI safe with JC MR Pontiac D114K calf due on 2/19.
Pasture exposed to KLC Commando 62 on 5/25-7/28.

47 KSR 4197M

• PB ANGUS
• GENOMIC ENHANCED

ASA: 4424207 | *Homo-Black, Homo-Polled* | BD: 2/15/2024

BASIN PAYWEIGHT 1682
DEER VALLEY GROWTH FUND X
DEER VALLEY RITA 36113

F A R TIGER 210A
KSR DACIA 1796D
KSR BLACKBIRD 496A

Act. BW 75 Act. WW 652

% EPDs	CE	BW	WW	YW	ADG	MCE	MILK	API	TI
	14.1	-1.3	87.7	147.4	0.37	11.2	27	127.7	85.6
	30	30	20	15	10	3	25	65	40

Bull bred with KLC Commando 62 calf due on 3/11.
Pasture exposed 5/25-7/28.

Her maternal brother sells as lot 36

PROJECTED MATING EPDS FOR BRED HEIFERS

Dam	Sire	BREED %	CE	BW	WW	YW	ADG	MCE	MILK	API	TI
Lot 38	JC MR PONTIAC D114K	PB SM	12.8	0.0	94.5	147.8	0.33	8.1	22.5	153.0	93.0
Lot 39	JC MR PONTIAC D114K	PB SM	12.3	0.3	92.6	142.5	0.31	7.6	25.7	151.0	91.5
Lot 40	KBHR BISMARCK L071	PB SM	13.0	-0.8	93.4	146.7	0.34	8.5	27.5	157.8	95.1
Lot 41	JC MR PONTIAC D114K	PB SM	9.3	1.9	98.5	150.6	0.33	5.8	21.5	139.2	91.0
Lot 42	JC MR PONTIAC D114K	PB SM	13.9	-0.5	85.3	127.1	0.26	8.4	20.0	156.8	88.5
Lot 43	JC MR PONTIAC D114K	PB SM	17.7	-2.0	86.6	133.1	0.29	9.0	24.0	164.2	91.7
Lot 44	RFS ELECTRIFY L46	3/4 SM, 1/4 AR	14.5	-2.5	77.7	118.2	0.26	8.1	31.4		
Lot 45	RFS ELECTRIFY L46	3/4 SM, 1/4 AR	15.1	-3.1	81.7	125.7	0.28	10.3	33.0		
Lot 46	JC MR PONTIAC D114K	5/8 AN, 3/8 SM	15.6	-0.9	96.0	153.8	0.36	9.0	25.2	151.3	93.3
Lot 47	KLC COMMANDO 62	PB AN	16.3	-2.3	76.3	126.6	0.32	12.1	27.5	136.0	79.5

JC MR PONTIAC D114K •3/4 SIMMENTAL
•GENOMIC ENHANCED

ASA: 4029546 | *Homo-Black, Homo-Polled* | BD: 2/24/22

GIBBS 7382E BROAD RANGE
GIBBS 9114G ESSENTIAL
GIBBS 7153E STAR 3136A



GIBBS 4475B PIRATE
FSCR D114 LUCILLE B089XP
FSCR B089 RKE 107

Adj. BW 75 | Adj. WW 782 | Adj. YW 1298

% EPDs	CE	BW	WW	YW	ADG	MCE	MILK	API	TI
	18	-2.5	88.3	139.6	0.32	9.9	23.3	170.7	95.4
	10	15	20	20	25	10	55	10	15

2025 born calves averaged 75lbs at birth.

RFS ELECTRIFY L46 •PB SIMMENTAL
•GENOMIC ENHANCED

ASA: 4220293 | *Red, Homo-Polled, Non-Diluter* | BD: 2/27/23

THSF LOVER BOY B33
ROCKIN H CAPTIVATE J75
ROCKIN H MS.CAROLINA



CDI VERDICT 220Y
WS ELECTRA E88
HSF MISS SKY 87U

Adj. BW 90 | Adj. WW 803 | Adj. YW 1345

% EPDs	CE	BW	WW	YW	ADG	MCE	MILK	API	TI
	18.9	-4	86.9	134.3	0.3	12.2	34.4	173.4	99.7
	2	2	25	25	25	1	3	10	10

KBHR BISMARCK L071 •PB SIMMENTAL
•GENOMIC ENHANCED

ASA: 4225747 | *Homo-Black, Homo-Polled* | BD: 3/19/23

HOOK'S BEACON 56B
KBHR HONOR H060
WS MISS SUGAR C4



WS PROCLAMATION E202
KBHR DEBUTANTE H113
BAR CK MS X38 106Z

Adj. BW 83 | Adj. WW 679 | Adj. YW 1236

% EPDs	CE	BW	WW	YW	ADG	MCE	MILK	API	TI
	17	-4.1	80	126	0.29	9.7	23.7	190.3	101.5
	4	1	50	35	30	4	45	2	5

2025 born calves averaged 70.5lbs at birth.

KLC COMMANDO 62 •PB ANGUS

ASA: 4410459 | *Black, Homo-Polled* | BD: 3/7/22

EF COMPLEMENT 8088
EF COMMANDO 1366
RIVERBEND YOUNG LUCY W1470



BALDRIDGE NEBRASKA 901
BFL EILEEN ELBA 54
B F L VERONICA

% EPDs	CE	BW	WW	YW	ADG	MCE	MILK	API	TI
	18.5	-3.3	64.9	105.7	0.26	12.9	28	128	67.8
	10	10	90	80	60	1	20	60	95

2025 born calves averaged 79lbs at birth.



LOT 50



LOT 49



LOT 48

This small group of open heifers offers a little bit of everything. We're retaining more females this year to expand our bred heifer offerings in 2027, so this smaller set of opens is the result. Even so, they impress — broody, stylish, and elegant, with the kind of presence and potential to develop into some great cows!

If you are interested in maternal sisters, lot 39 & 48 might be the pair for you!

48 KSR 5231N •PB SIMMENTAL
• GENOMIC ENHANCED

ASA: 4580920 | *Homo-Black, Homo-Polled* | BD: 2/16/25

CLRS GUARDIAN 317G X KSR WIDE LOAD 318E
HL TOMMY BOY K65 X **KSR HARPER 131H**
 HL MS SMOOTH CRIMINAL H60 KSR DIXIE 732D

Act. BW 93 Act. WW 718

% EPDs	CE	BW	WW	YW	ADG	MCE	MILK	API	TI
	5.3	1.8	97.8	146.7	0.31	4.3	26.3	130.8	88.8
	90	65	10	10	20	80	30	55	30

50 KSR 5270N •PB SIMMENTAL
• GENOMIC ENHANCED

ASA: 4580908 | *Red, Hetero-Polled, Non-Diluter* | BD: 2/19/25

ROCKIN H CAPTIVATE J75 X RFS END ZONE E78
LCDR CAPTAIN 184L X **KSR TOSICA 70G**
 CDI MS BEEF KING 11Z KSR CECILIA 370Z

Act. BW 84 Act. WW 660

% EPDs	CE	BW	WW	YW	ADG	MCE	MILK	API	TI
	11.8	1.1	84.7	125.8	0.26	5.5	30	138.1	83.1
	30	50	30	35	45	55	15	40	45

49 KSR 5110N •PB ANGUS
• GENOMIC ENHANCED

ASA: 4581135 | *Homo-Black, Homo-Polled* | BD: 2/25/25

G A R SUNBEAM X HOTZ FIRST N GOAL 1548
CONNELLY COMMERCE X **HOMEDALE KARAMA 8810**
 AVIRA OF CONANGA 814R HOMEDALE KARAMA 022

Act. BW 93 Act. WW 674

% EPDs	CE	BW	WW	YW	ADG	MCE	MILK	API	TI
	12.5	-0.3	83.8	132.1	0.3	6	25.2	123.1	79
	45	50	30	30	35	70	40	70	65

51 KSR 5239N •PB SIMMENTAL
• GENOMIC ENHANCED

ASA: 4580896 | *Red, Homo-Polled, Non-Diluter* | BD: 3/2/25

CDI SECRET AGENT 407C X RFS CELEBRITY C87
REDHILL BURLEY 99J X **KSR GINNIE 39G**
 REDHILL W107 153X 257B KSR ROSEWOOD 259Y

Act. BW 80 Act. WW 626

% EPDs	CE	BW	WW	YW	ADG	MCE	MILK	API	TI
	7.4	2.6	90.1	129.3	0.25	4.1	25.5	149.6	91.5
	80	80	20	30	50	80	35	25	20



THE KLAIN FAMILY

DURNELL & DARCY KLAIN, TREY & KADEY KLAIN, ADAM & DALYCE BALK,
TYLER, CARRIE, FINLEY & SKYLAR KLAIN

***Return to:
Klain Simmental Ranch
1364 20th St. NW
Ruso, ND 58778***

02.07.2026

klainsimmentalranch.com
Follow us on Facebook for updates!